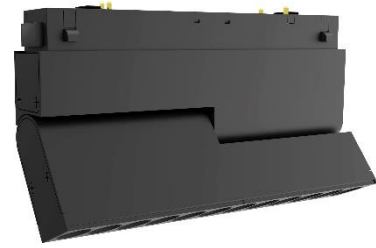


Datasheet

CX9001F



General

- Indoor
- General Light
- Install onto the track
- Profile Inset
- Housing: black
- System Output: 600lm
- IP 20

LED



- 2700K/3000K/3500K/4000K/5000K
- CRI>90
- 50000h@L80B10
- SDCM: 3

Optics

- Beam angle: 12°/34°/55°
- UGR <15

Electric

- LED Driver: ON-OFF
- LED Power: 10W
- 48V

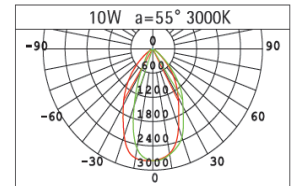
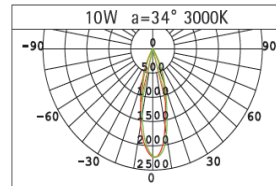
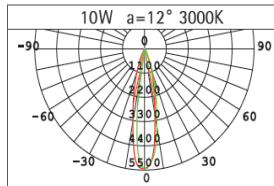
Dimensions

- Measurement: 195mm x 20mm
- Height: 82mm

Description

- Magnetic Foldable Spotlight Inset with ON-OFF;
- Black painted finish (RAL 9005);
- LED 10W;
- Measurement 195mm x 20mm; height of the profile inset is 82mm;
- High color rendering at an index of CRI90;
- After a lifetime of 50000h min. 80% of the luminous flux with energy efficient OSRAM LED Chips;
- 5 years warranty;
- Precise beam characteristic with 12°/34°/55° beam angles;
- Lighting perfectly suitable for reading, writing as well as computer and control work according to DIN EN 12464-1 (UGR<15);
- Degree of housing protection according to DIN EN 60529 (IP20).

Light distribution



10W 12°				10W 34°				10W 55°			
Lux				Lux				Lux			
h(m)	d(m)	Em	E _{max}	h(m)	d(m)	Em	E _{max}	h(m)	d(m)	Em	E _{max}
1	0.23	3769	5491	1	0.51	1492	2236	1	0.68	1954	2859
2	0.46	942.3	1373	2	1.02	372.9	559.1	2	1.36	488.5	714.8
3	0.69	418.8	610.1	3	1.53	165.8	248.5	3	2.04	217.1	317.7



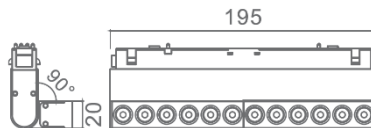
CB

CE

RoHS



Technical drawing



The technical data represent rated values for an ambient temperature of 25°C. The data values for the luminous flux are initially subject to a tolerance of +/- 10%, those for the electrical connected load are initially subject to a tolerance of +/- 10%, and those for the colour temperature are initially subject to a tolerance of +/- 150 K. No liability is assumed for typographical or printing errors.

