

HDL-MPH101.48  
iElegance Series 1 Button Smart Panel  
HDL-MPH102.48  
iElegance Series 2 Buttons Smart Panel  
HDL-MPH104.48  
iElegance Series 4 Buttons Smart Panel  
HDL-MPH108.48  
iElegance Series 8 Buttons Smart Panel

## buspro

**Datasheet**  
Issued: June 11, 2019  
Edition: V1.0.0



Figure 1. HDL-MPH101.48



Figure 2. HDL-MPH102.48



Figure 3. HDL-MPH104.48



Figure 4. HDL-MPH108.48

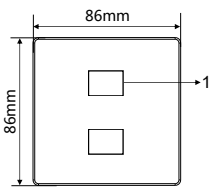


Figure 5

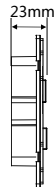
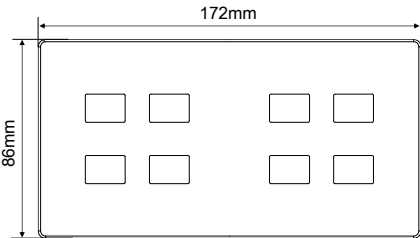


Figure 6



HDL-MPH108.48

Figure 7

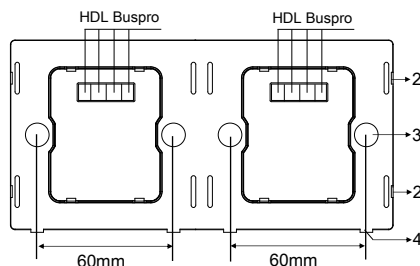


Figure 8

Figure 5 - 8. Dimensions

## Overview

iElegance Series 1/2/4/8 Button(s) Smart Panel (See Figure 1-4) is a multi-function control panel which has mechanical buttons and support multiple button modes and control types, and can control lighting, curtain, scene, etc.

## Functions

- Multiple key mode: single on, single off, single on/off, combination on (up to 99 targets), combination off (up to 99 targets), combination on/off (up to 99 targets), double click/single on-off (up to 49 targets), double click/combination on-off (up to 49 targets), momentary, short press/long press (up to 49 targets), short press/long momentary (up to 49 targets), etc.
- Panel control types: Scene, sequence, Timer switch, Universal switch, Single channel lighting control, Curtain switch, GPRS Control, Panel control, Broadcast scene, Broadcast channel, Security module, Music control, etc.
- Communication: HDL Buspro
- Supports HDL Buspro online upgrading

## Important Notes

- The panel should be wall box mounted.
- Buspro cable - CAT5E or dedicated HDL Buspro cable.
- It is recommended to adopt Buspro connection - Series connection (hand-in-hand).

## Product Information

**Dimensions - See Figure 5 - 8**

- 1. Key button:** Short press for switch on/off control, long press for dimming.
- 2. Fastener**
- 3. Screw hole**
- 4. Split gap**

**Address modification:** Press any button for 15 seconds to enter switch address configuration, then click "Address Management" → "Modify Address" in HDL Buspro Setup Tool. Press any key to exit after the modification.

**Product installation and disassembly**

(Take HDL-MPH102.48 as an example)

**Installation - See Figure 9 -11**

Step 1. Fix the base panel into the wall box with screws.

Step 2. Install the cover on the base panel. Make sure the base panel is connected with the panel cover tightly.

**Disassembly - See Figure 12**

Step 1. Insert the panel gap with a slotted screwdriver.

Step 2. Pry up the panel cover gently. Then the panel cover can be taken off.

## Safety Precautions

- The installation and commissioning of the device must be carried out by HDL or the organization designated by HDL. For planning and construction of electric installations, the relevant guidelines, regulations and standards of the respective country are to be considered.
- The device should be wall box mounted. HDL does not take responsibility for all the consequences caused by installation and wire connection that are not in accordance with this document.
- Please do not privately disassemble the device or change components, otherwise it may cause mechanical failure, electric shock, fire or body injury.
- Please resort to our customer service department or designated agencies for maintenance service. The warranty is not applicable for the product fault caused by private disassembly.

## Package Contents

Panel\*1 / Screw\*2 / Datasheet\*1

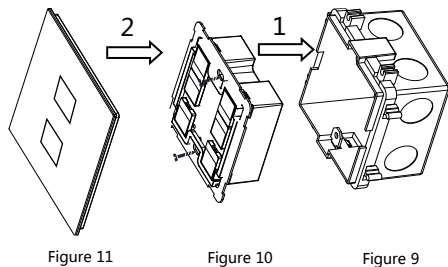


Figure 9 – 11. Installation

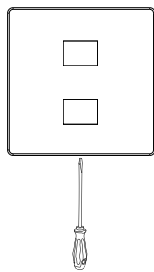


Figure 12. Disassembly

## Technical Data

### Basic Parameters

Working voltage	12~30V DC
Working current	15mA/24V DC
Communication	HDL Buspro
Cable diameter of Buspro terminal	0.6-0.8mm

### External Environment

Working temperature	-5°C~45°C
Working relative humidity	≤90%
Storage temperature	-20°C~60°C
Storage relative humidity	≤93%

### Specifications

Dimensions	HDL-MPH101.48: 86×86×23 (mm)
	HDL-MPH102.48: 86×86×23 (mm)
	HDL-MPH104.48: 86×86×23 (mm)
	HDL-MPH108.48: 172×86×23 (mm)
Net weight	HDL-MPH101.48: 67g
	HDL-MPH102.48: 66.5g
	HDL-MPH104.48: 66.5g
	HDL-MPH108.48: 174g
Housing material	ABS, aluminum
Installation	Wall box (See Figure 9 - 11)
Protection rating (Compliant with EN 60529)	IP20

### Name and Content of Hazardous Substances in Products

Components	Hazardous substances					
	Lead (Pb)	Mercury (Hg)	Cadmium (Cd)	Chromium VI (Cr (VI))	Poly-brominated biphenyls (PBB)	Poly-brominated diphenyl ethers (PBDE)
Plastic	o	o	o	o	o	o
Hardware	o	o	o	o	-	-
Screw	o	o	o	×	-	-
Solder	×	o	o	o	-	-
PCB	×	o	o	o	o	o
IC	o	o	o	o	×	×

The symbol "-" indicates that the hazardous substance is not contained.

The symbol "o" indicates that the content of the hazardous substances in all the homogeneous materials of the component is below the limit requirement specified in the Standard IEC62321-2015.

The symbol "x" indicates that the content of the hazardous substance in at least one of the homogeneous materials of the part exceeds the limit requirement specified in the Standard IEC62321-2015.

## HDL Buspro Cable Guide

HDL Buspro	HDL Buspro Cable	CAT5/CAT5E
DATA+	Yellow	Blue/Green
DATA-	White	Blue white/Green white
COM	Black	Brown white/Orange white
24V DC	Red	Brown/Orange

#### Technical support

E-mail: [support@hdlautomation.com](mailto:support@hdlautomation.com)

Website: <https://www.hdlautomation.com>